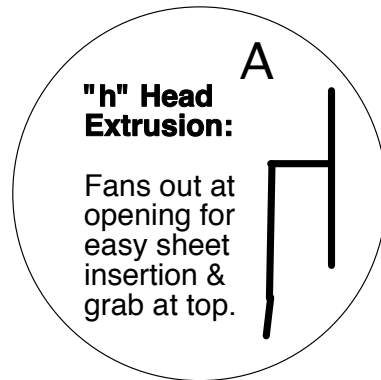
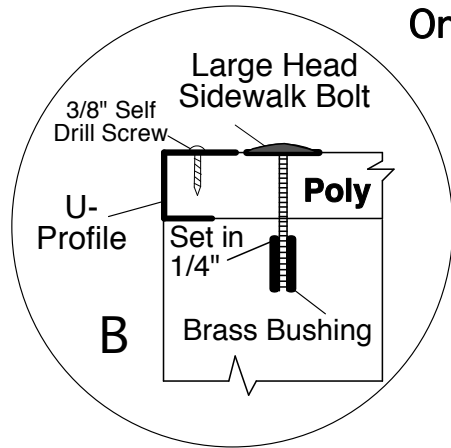


# 16mm Pop-On Panels - For greenhouse & pool enclosure walls. Design & Install [sundancesupply.com](http://sundancesupply.com)

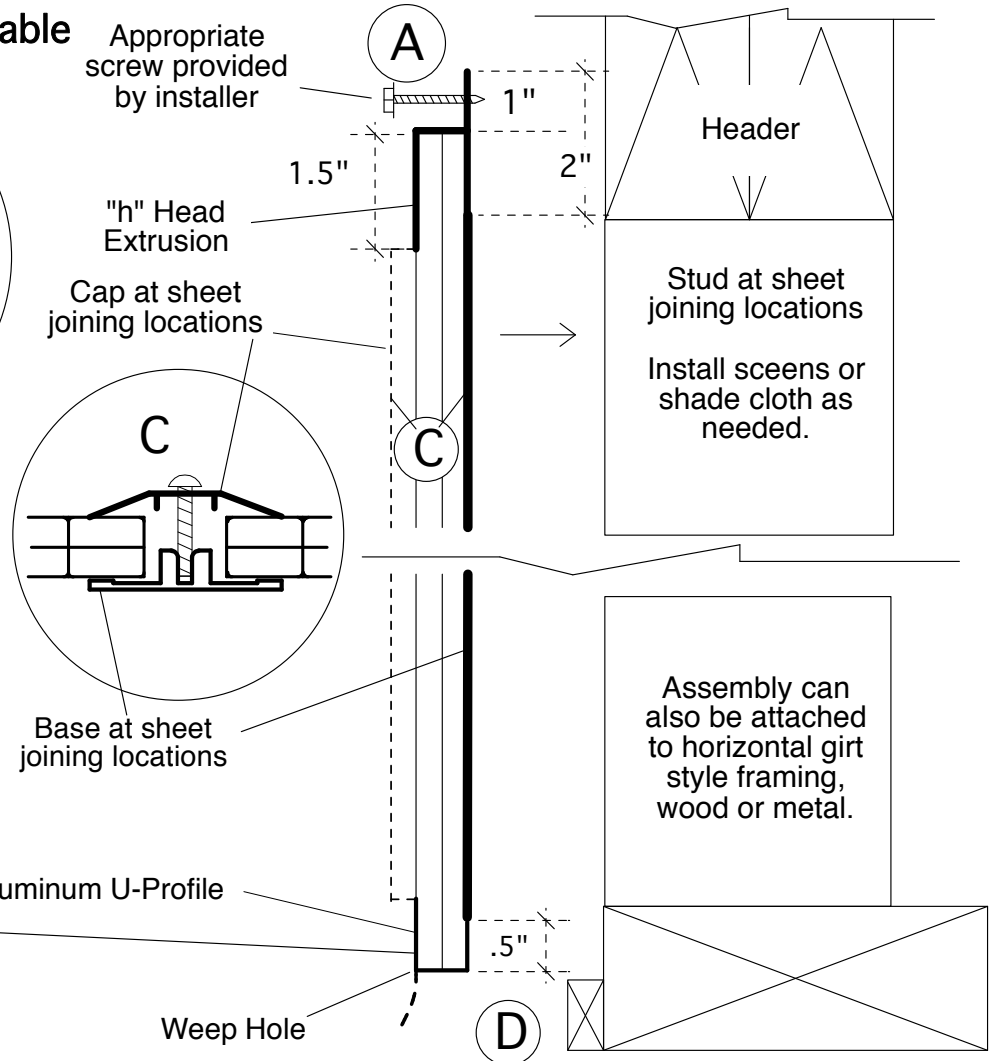
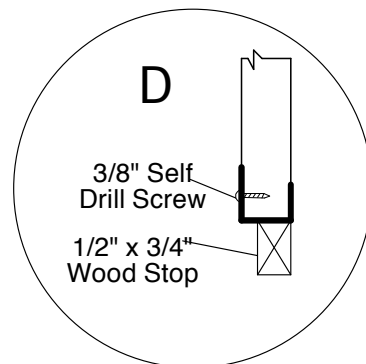
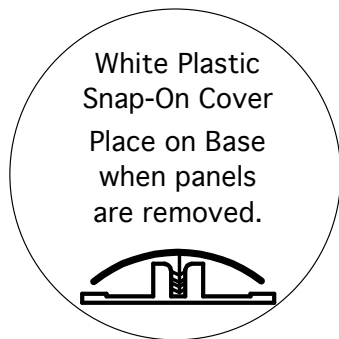
Fasten continuous 8 ft. lengths of "h" (A) along length of header where poly to be installed. Cut poly sheets to length. Place aluminum tape along top edge. Cut Base and predrill holes for attachment screws (in center of Base) 3" from end & every 12", then attach Base (C) to studs (positioned every 48.75" to 49" on-center) or horizontal girts, keeping in mind Base butts with bottom of "h" and ends 1/2" before end of poly, where short leg of U-Profile is placed. Predrill 3/16" holes in Cap starting at 3/4" to 1-1/2" from end & every 12". Alternate starting hole so when Caps are removed & put back, at random, attachment points do not line up. This ensures many years of continual resetting of Caps, as screws can even be placed in same location many times. Take 1st sheet & attach U-Profile along outside vertical edge. Place in "h" and mark where Sidewalk Bolts will go (B). Drill holes in sheet, place back on frame & mark where to put Bushings (B) or tap 1/4"-20 holes in structural metal frame. Set Bushings (if wood frame) and install 1st sheet. Continue with adjoining sheets and attach Caps (C). At end do detail (B) again. Once all sheets set, drill 1/16" weep holes in U-profile (D), cut to length so when sheets removed U-Profiles stay on, attach to sheet with 3/8" screws, screw on wood stop & wall is done! No silicone!

**Only White Aluminum Available**



## B: Installation Of Brass Wood Bushings & Sidewalk Bolts

1. Premark holes.
2. Using 3/8" Wood Spade Drill Bit, drill a hole deep enough to insert the Bushing into wood. Blow out dust in hole.
3. Insert Bushing with unslotted portion into the hole first.
4. Using drill driven tool provided, screw Bushing into hole until fully embedded in wood.
5. Position panel over Bushing Anchor and affix it with the Sidewalk Bolt.



Assembly can also be attached to horizontal girt style framing, wood or metal.